

Due Friday, September 13

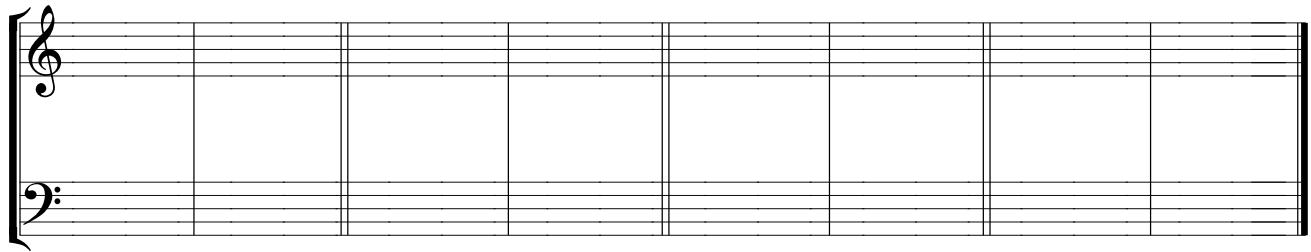
Read the handout on first-species counterpoint carefully before beginning this worksheet. For all exercises, please label your intervals between the staves. (It's okay to show simple intervals sizes even if you write compound intervals. Be sure to distinguish P5 from d5.)

1. Using only consonant intervals, provide two different examples for each item below.

Good parallel motion:

Bad parallel motion:

(**consonant** but unsuitable harmonic intervals)



Good similar motion:

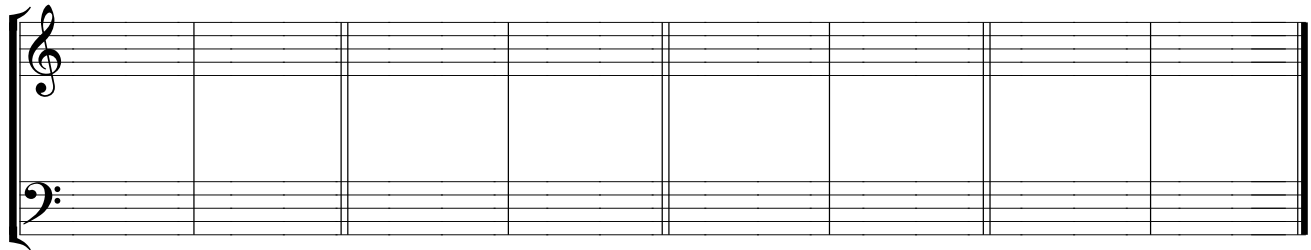
a) approaching a P5

b) approaching a P8

Bad similar motion:

a) approaching a P5

b) approaching a P8



2. Add first-species counterpoint to each *cantus firmus* provided.

