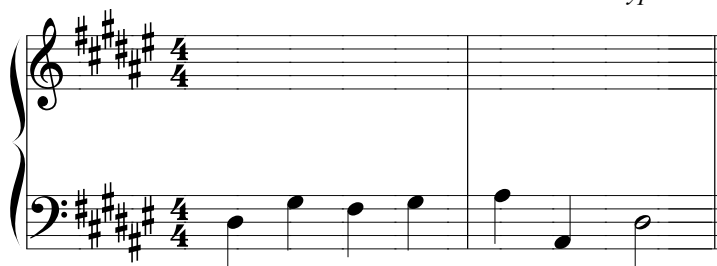


Due Monday, November 18

Harmonize the unfigured bass lines below in keyboard style, using functional harmony throughout. Provide appropriate Roman numerals and figures, and make sure your notation consistently shows four distinct parts. Be careful to restrict yourself to the chords we have covered in class! Finally, identify the cadence type and add contextual analysis symbols (T/PD/D labels).

Cadence type:*Cadence type:*

Harmonize the melody below in vocal style, representing the chords you choose with appropriate Roman numerals and figures. As always, write the complete bass line before starting the inner voices. You should use inversions judiciously to avoid an unwanted cadential effect before the ending. Again, stick to chords we have covered in class.

Cadence type: