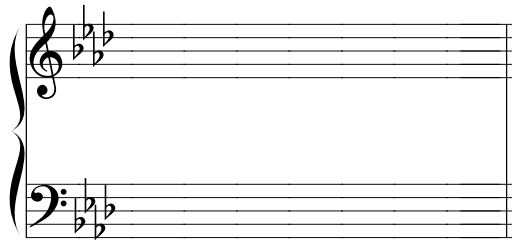


**PRACTICE QUIZ #5a**  
**Time limit: 3 minutes**

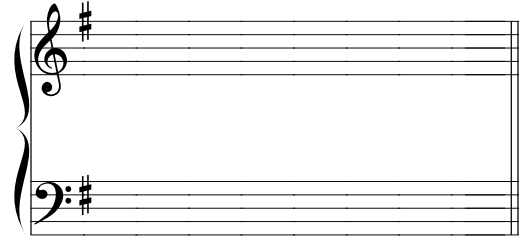
Write a bass line and Roman numerals corresponding to the first five chords of each sequence type, starting from the tonic. (There may be more than one correct answer.) You may write upper voices for extra credit, but only the bass line is required.

*Ascending 5-6 sequence*



A $\flat$ :    \_ \_ \_ \_ \_

*Descending-fifth sequence*

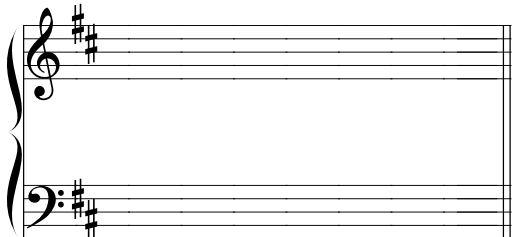


e:    \_ \_ \_ \_ \_

**PRACTICE QUIZ #5b**  
**Time limit: 3 minutes**

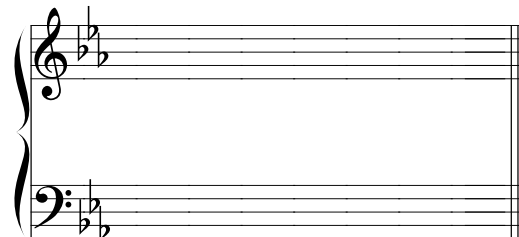
Write a bass line and Roman numerals corresponding to the first five chords of each sequence type, starting from the tonic. (There may be more than one correct answer.) You may write upper voices for extra credit, but only the bass line is required.

*Descending-third (= descending 5-6) sequence*



b:    \_ \_ \_ \_ \_

*Ascending-fifth sequence*

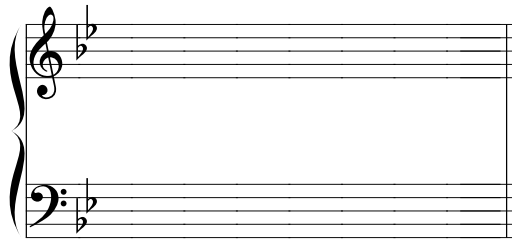


E $\flat$ :    \_ \_ \_ \_ \_

**PRACTICE QUIZ #5c**  
**Time limit: 3 minutes**

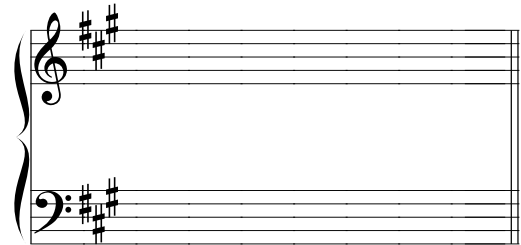
Write a bass line and Roman numerals corresponding to the first five chords of each sequence type, starting from the tonic. (There may be more than one correct answer.) You may write upper voices for extra credit, but only the bass line is required.

*Ascending 5-6 sequence*



B $\flat$ :    \_    \_    \_    \_    \_

*Descending-third (= descending 5-6) sequence*

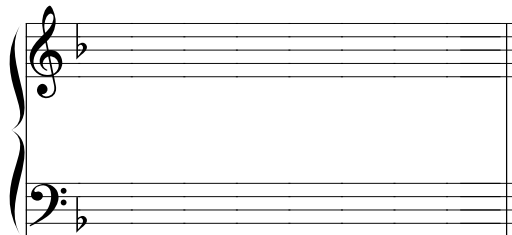


f $\sharp$ :    \_    \_    \_    \_    \_

**PRACTICE QUIZ #5d**  
**Time limit: 3 minutes**

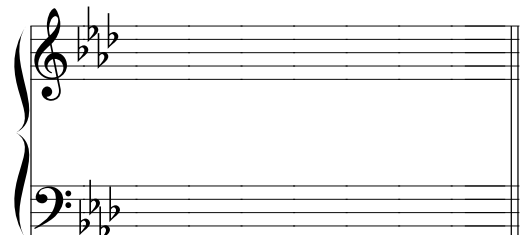
Write a bass line and Roman numerals corresponding to the first five chords of each sequence type, starting from the tonic. (There may be more than one correct answer.) You may write upper voices for extra credit, but only the bass line is required.

*Descending-third (= descending 5-6) sequence*



F:    \_    \_    \_    \_    \_

*Descending-fifth sequence*



A $\flat$ :    \_    \_    \_    \_    \_