

ASSIGNMENT #8
Due Friday, January 31

A list of excerpts from your anthology appears below; measure numbers refer to downbeats (in other words, there may be a pick-up, and the last measure may contain a pick-up to the next phrase). Listen to each excerpt and decide whether or not it constitutes a period. If it is a period, identify the type of period (parallel or contrasting). If it is not a period, briefly explain why it cannot be considered a period.

- A. Beethoven, Piano Sonata in C Minor, Op. 13 (*Pathétique*), third movement, 44-51
(anthology page 94)
- B. Beethoven, Piano Sonata in C Major, Op. 53 (*Waldstein*), first movement, 1-13
(anthology page 101)
- C. Chopin, Prelude in C Minor, Op. 28, no. 20, 1-4
(anthology page 136)
- D. Coleridge-Taylor, *Valse Bohémienne*, Op. 22, no. 1, 1-16
(anthology page 139)
- E. Hensel, “Neue Liebe, neues Leben,” 1-8
(anthology page 228)
- F. Mozart, String Quartet in D Minor, K. 421, third movement, 40-47
(anthology page 319)
- G. Schubert, “Du bist die Ruh,” 8-15
(anthology page 380)

Some of the excerpts above contain sentences. Identify at least two of these excerpts and indicate specifically where you hear a sentence.

We turn now to a rather different body of literature that nonetheless clearly draws on the traditions of classical music. If you don't already know these very famous fight songs, make sure you listen to them; links to recordings and condensed scores are provided online.

1. "On, Wisconsin!" (chorus, measures 1-8)

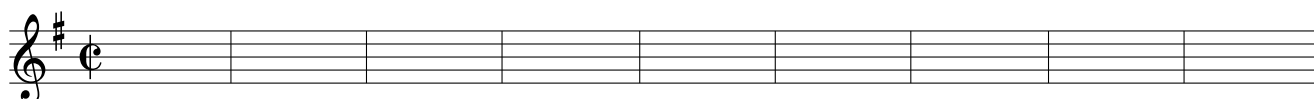
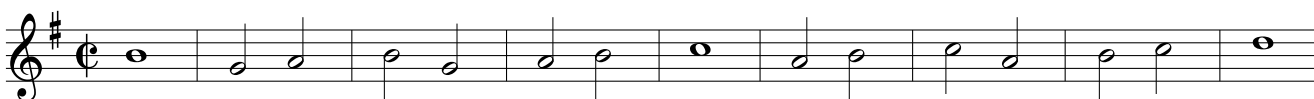


- A. What kind of embellishing tone is featured in the excerpt? Circle and label each appearance.
- B. Is this excerpt a subphrase, a phrase, or a period? Explain.

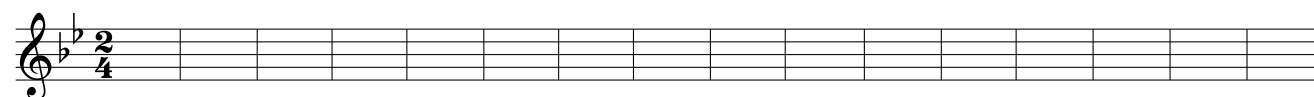
- C. Write a melodic reduction of this excerpt on the staff provided.



2. Write a melodic reduction of this excerpt from "The Victors" (chorus, measures 1-9).



3. Write a melodic reduction of this excerpt from "Across the Field" (measures 1-16).



4. Although all three fight songs are obviously different, they also have some similarities. List some features they share. (Consider both the musical surface and your reductions.)