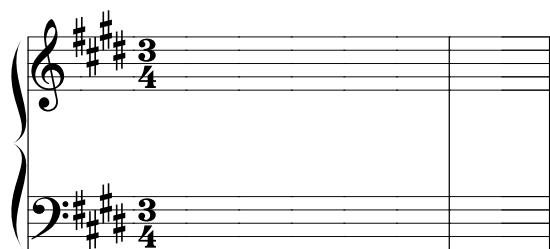


ASSIGNMENT #4
Due Wednesday, January 15

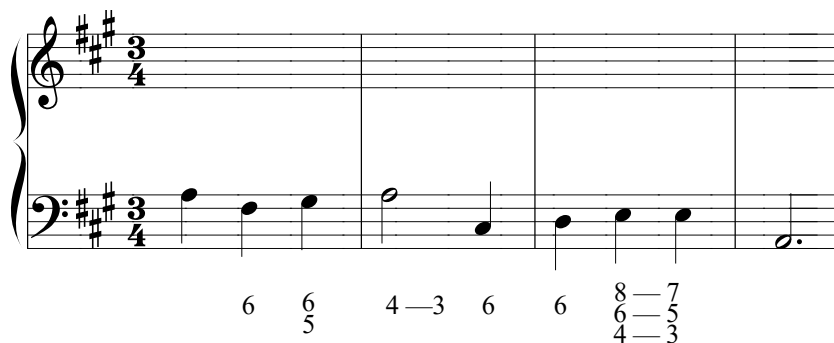
Fill in the blanks with appropriate Roman numerals and figures; there may (or may not) be multiple correct answers. When you are sure the harmony is good, realize the progression in four-part vocal style.



E: ____ ii₂⁴ ____ ____

Add appropriate Roman numerals corresponding to the figured bass below; also provide T/PD/D labels to indicate the primary harmonic functions. Realize the progression in keyboard style. Identify the final cadence type.

Cadence type:



Realize the progression below in vocal style. When you are sure your solution is correct, add at least two passing tones and at least one suspension. (Please circle and identify these embellishing tones, indicating the specific suspension type.) Identify the final cadence type. As before, add T/PD/D labels.

Cadence type:

b: i V⁶ i i⁶ iv iv⁶ V