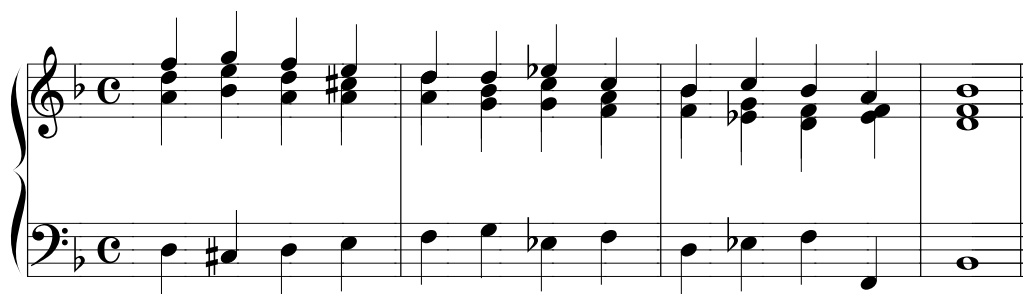


ASSIGNMENT #33
Due Friday, April 11

List all of the keys that are considered closely related to B major.

List all of the keys that are considered closely related to F minor.

Provide a harmonic analysis (Roman numerals and figures) for the modulating progression below. Be careful to depict the pivot chord clearly.



The minuet from Mozart's String Quartet No. 17 (K. 458) appears on the next page. Please do the following:

- Name the overall form of the movement as specifically as possible.
- On the score, locate all cadences in the movement and identify each by type.
- Do measures 1-8 form a period? If so, what type? If not, why not?
- Provide a thorough harmonic analysis of measures 1-8 (Roman numerals, figures, and embellishing tones). Generally expect one chord per bass note.
- There is only one true modulation in this excerpt. Where is it, and what is the key? Where does this key stop sounding like a tonic, and why?
- On the score, locate a passage exhibiting compound melody (at least three measures). Show the stepwise motion for each implied voice.
- On the score, locate a sequence. Show each repetition of the basic pattern. Which familiar sequence type does this particular sequence elaborate?
- Extra credit: find a different elaborated sequence and identify the underlying type.

Mozart, String Quartet No. 17 (K. 458), Minuet

MINUETTO.

Moderato.

The first system of the Minuet score, measures 1-8. It features four staves: Violin I, Violin II, Viola, and Cello/Double Bass. The key signature is B-flat major (two flats) and the time signature is 3/4. The music begins with a forte (*f*) dynamic. The Violin I part has a trill on the first measure. The Cello/Double Bass part has a forte (*f*) dynamic marking.

The second system of the Minuet score, measures 9-16. The music continues with the same instrumentation and key signature. The Violin I part has a trill on the first measure. The Cello/Double Bass part has a piano (*p*) dynamic marking.

The third system of the Minuet score, measures 17-24. The music continues with the same instrumentation and key signature. The Violin I part has a trill on the first measure. The Cello/Double Bass part has a forte (*f*) dynamic marking. The system concludes with a repeat sign.