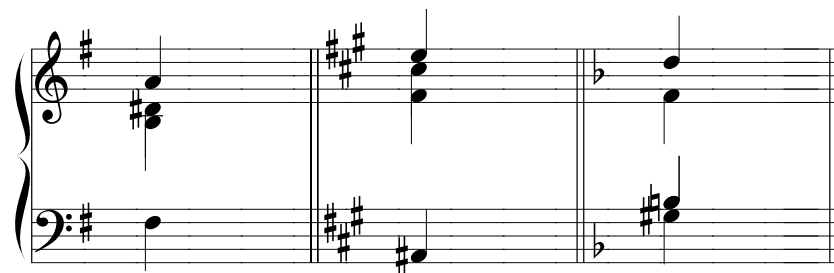


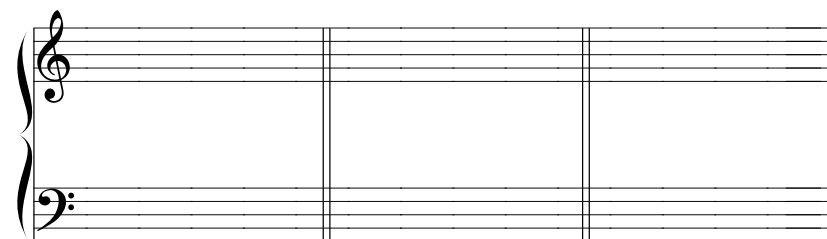
ASSIGNMENT #30
Due Friday, April 4

Identify the secondary chords below (be sure to include figures as well as Roman numerals) and resolve each chord correctly. Maintain keyboard or vocal style as appropriate.



G: _____ f#: _____ d: _____

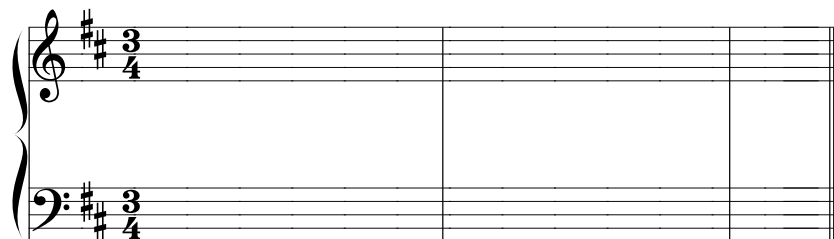
Write the chord indicated, also supplying the key signature. Then resolve each chord correctly. Use keyboard style for the first two and vocal style for the last one.



b: V_2^4/iv _____ A: $vii^{\circ 7}/vi$ _____ B \flat : $vii^{\circ 6}/ii$ _____

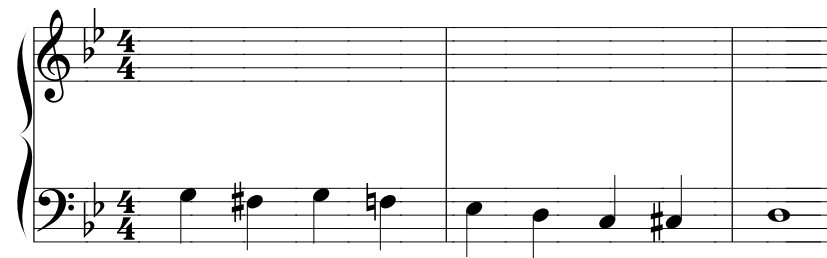
Realize the progressions below, adding appropriate Roman numerals to the figured bass. Please also add a contextual analysis. Keep in mind that it's usually a good idea to put tendency tones in the outer voices when possible.

Vocal style:



D: I vi V_2^4/ii ii^6 V_5^6/V V I

Keyboard style:



6 4_2 6 6_4 6_5 7_b #